



STELLAR®

RHEEM STELLAR® 50L ELECTRIC STAINLESS STEEL WATER HEATER


ELECTRIC

2
PEOPLE

MAINS
PRESSURE

10
YEAR CYLINDER
WARRANTY¹



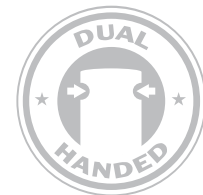
- **Compact design** to fit into cupboards and under bench
- **Stainless steel cylinder and water fittings** resist corrosion for longer, extending product life
- **Hi-temp 80°C thermostat** provides even more hot water
- **4.8% better performance than MEPS** reduces energy use, saving money
- **Dual handed fittings** located on the front of the water heater
- **42% lighter³** easier to carry and position for installation
- **No anode** saves on maintenance and service costs
- **Mains pressure at multiple taps**
- **10 Year cylinder warranty¹**
- **Australian made**

HI-TEMP THERMOSTAT

With a maximum thermostat setting of 80°C, Rheem Stellar 50L stainless steel electric water heaters have the potential to contain more energy than vitreous enamel 50L models. When delivering water at a constant showering temperature of 42°C, you will enjoy up to an extra 2 minutes of showering time!² No small feat for a compact 50L product.

42% LIGHTER³

With a packaged weight of only 17kg, the Rheem Stellar Stainless Steel 50L water heater is 12kg lighter than a 50L Rheem vitreous enamel product. You'll appreciate this saving when carrying these products up a flight of stairs, or when positioning the units into place in a tight cupboard.



COMES ON STEADY, HOT AND STRONG

INSTALL A





STELLAR®

THE BEST IN ELECTRIC HOT WATER

The new benchmark in electric water heater performance and durability. Rheem Stellar® Electric combines high thermal efficiency with the purity and performance of a stainless steel cylinder in a range of popular model sizes.

Stainless steel cylinders can withstand higher temperature settings than conventional vitreous enamel lined cylinders. Enamel diminishes over time due to the functioning of the water heater, and higher temperatures accelerate this process.

THE STAINLESS STEEL ADVANTAGE

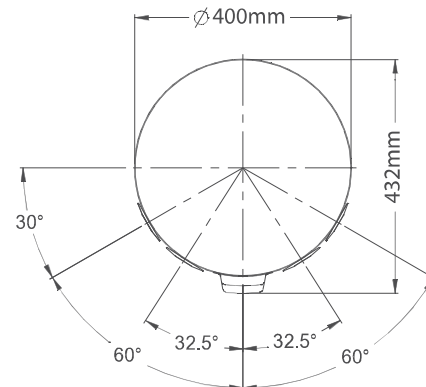
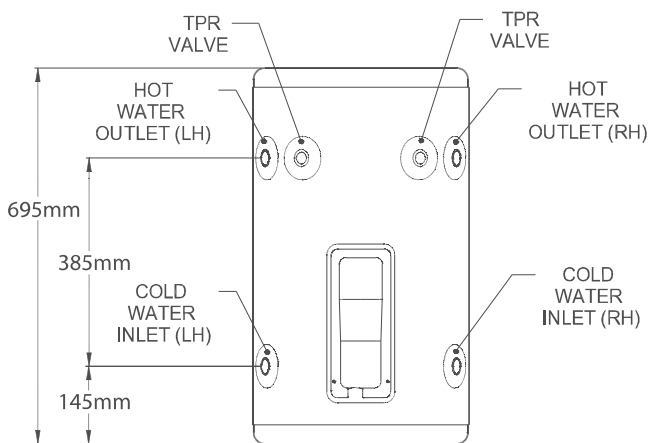
The stainless steel cylinder in Rheem Stellar® Electric models not only offers purity and durability, it can help save money in the long run.

- Can resist corrosion for longer than conventional vitreous enamel cylinders
- No sacrificial anode, for reduced lifetime service costs
- Superior energy efficiency

SPECIFICATIONS		50 LITRE
SINGLE ELEMENT	Model	4A1050
Hot Water Delivery	Litres	50
Storage Capacity	Litres	53
Voltage (single phase)		240Vac
Maximum Supply Pressure		
– with expansion control valve		960 kPa
– without expansion control valve		1120 kPa
Temperature & Pressure Relief Valve (T&PR)		1400 kPa
ECV setting		1200 kPa
Thermostat setting (Maximum)		80°C
Hot & Cold Water connection		Rp 20 (¾") Female
Warranty (Cylinder) ¹		10 years
Warranty (Parts & Labour) ¹		1 year
Protection rating		IPX4
Better than MEPS by: Single Element		4.8%
Weight (empty)	kg	17
Element Availability	kW	1.8
		2.4 (with plug)
		3.6

Rheem Stellar® Stainless Steel water heaters are not recommended for installation in some areas. Refer to the Rheem website www.rheem.com.au for details of areas not recommended and for which product.

Rheem® Stellar Electric 50 L



All models are suitable for indoor or outdoor installation. All models have left and right hand (dual handed - DH) cold water, hot water and T&PR connections. Technical data is subject to change.

1. Rheem Stellar Stainless Steel Warranty: 10 Year cylinder warranty, 1 Year parts and labour warranty on all other components for domestic (non-commercial) installations. Conditions apply. See the Rheem warranty set out in the Owner's Guide & Installation Instructions or view it at www.rheem.com.au/warranty.
 2. When delivering 42°C water through a WELS rated 4 star (7.5L/min) showerhead outlet. Rheem Stellar 50L (4A1050) thermostat set to 80°C. Rheem 50L (191050) thermostat set to 70°C.
 3. 42% lighter than comparable Rheem vitreous enamel water heater models of the same capacity.
 Materials and data are subject to change without notice Registered trademark of Rheem Australia Pty Ltd. Trademark of Rheem Australia Pty Ltd

Rheem Australia Pty Ltd.

1 Alan Street, Rydalmere, New South Wales 2116, Australia
PO Box 7508, Silverwater, New South Wales 2128, Australia

